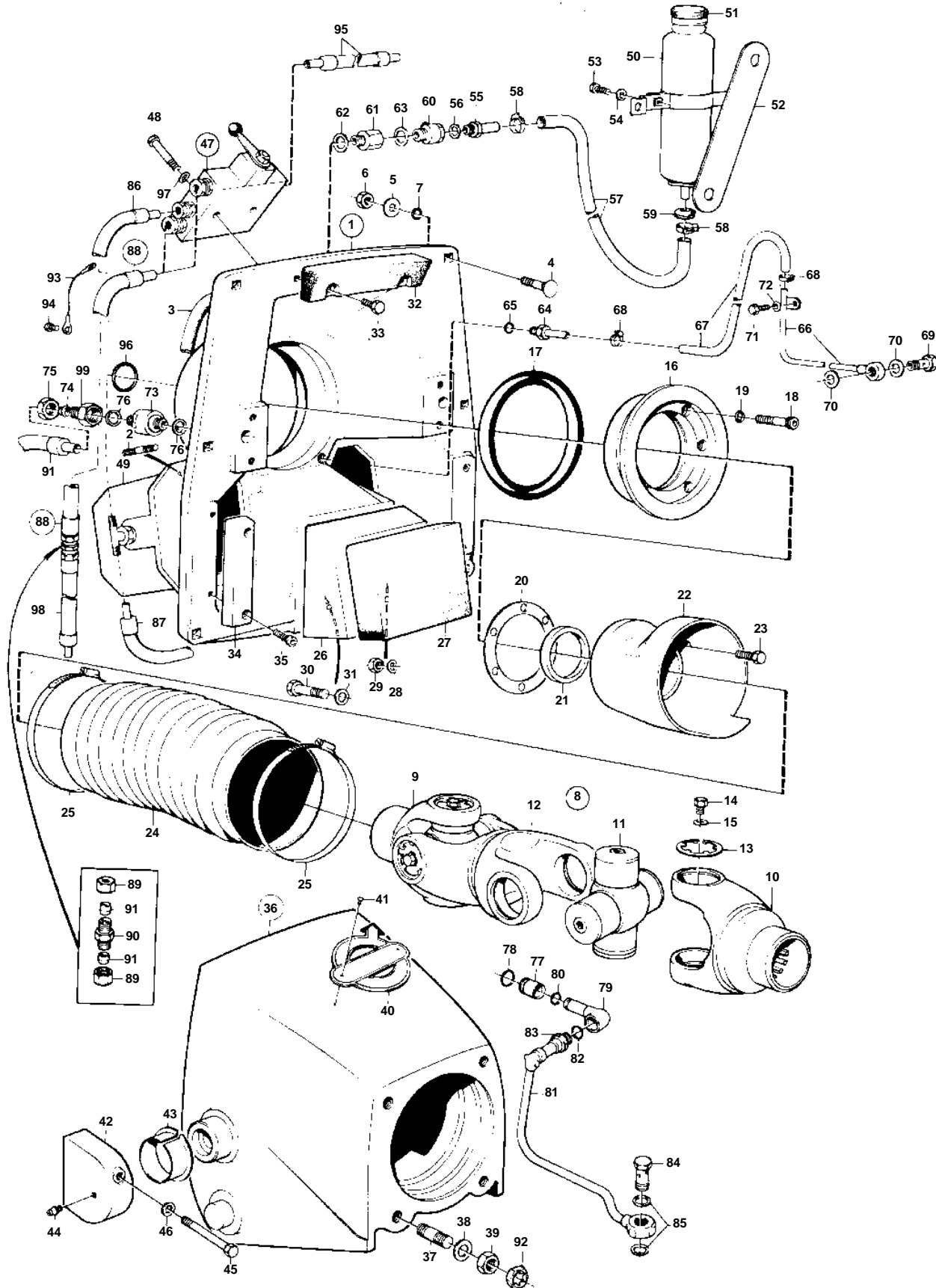


AQD70B,AQD70BL



AQD70B,AQD70BL

| REF | PART NO. | QTY | DESCRIPTION | SEE SEC. | NOTES |
|-----|----------|-----|--|----------|-----------------------|
| 1 | 832365 | 1 | Shield | | |
| 2 | 953488 | 4 | • Stud | | |
| 3 | 832265 | 1 | Sealing strip | | |
| 4 | 945097 | 7 | Screw | | |
| 5 | 832328 | 7 | Washer | | |
| 6 | 955829 | 7 | Nut | | |
| 7 | 945424 | 7 | O-ring | | |
| 8 | 850190 | 1 | Double joint | | |
| 9 | | 1 | • FORK | | |
| 10 | | 1 | • FORK | | |
| 11 | 852520 | 2 | • Cross piece | | |
| | 832444 | 2 | • Cross piece | | D = 131 MM ALT |
| 12 | | 1 | • INTERM.PIECE | | |
| 13 | 832450 | 8 | • Lock ring | | |
| 14 | 832451 | 8 | • Plug | | |
| 15 | 832452 | 8 | • Gasket | | |
| 16 | 832256 | 1 | Clamping ring, CLAMP RING | 04A-0550 | |
| | | | | 04A-0800 | |
| 17 | 832326 | 2 | Damping ring | | |
| 18 | 959499 | 6 | Allen head screw | | |
| 19 | 943194 | 6 | Washer | | |
| 20 | 832323 | 1 | Gasket | | |
| 21 | 944971 | 1 | Sealing ring | | |
| 22 | 832472 | 1 | Bellows attachment | | |
| 23 | 956569 | 5 | Screw | | |
| 24 | 875581 | 1 | Bellows | | |
| 25 | 961907 | 2 | Hose clamp | | |
| 26 | 832311 | 1 | Support block | | |
| 27 | 832335 | 1 | Support element | | |
| 28 | 942336 | 2 | Spring washer | | |
| 29 | 943152 | 2 | Nut | | |
| 30 | 960019 | 2 | Screw | | |
| 31 | 940280 | 2 | Spring washer | | |
| 32 | 832324 | 1 | Rubber cushion | | |
| 33 | 940203 | 2 | Screw | | |
| 34 | 832344 | 2 | Zinc electrode | | |
| 35 | 959439 | 4 | Screw | | |
| 36 | 832398 | 1 | Guide casing | | |
| 37 | 839687 | 4 | • Stud | | |
| 38 | 945095 | 4 | Washer | | |
| 39 | 832499 | 4 | Nut | | |
| 40 | 832342 | 1 | Emblem | | |
| 41 | 804269 | 2 | Drive screw | | |
| 42 | 832459 | 2 | Bearing housing | | |
| 43 | 832260 | 2 | • Bushing | | |
| 44 | 951739 | 2 | Lubricating nipple | | EARLY TYPE 1/4"-28UNF |
| | 940194 | 2 | Nipple | | LATE TYPE 1/8"-28NPSF |
| 45 | 832415 | 4 | Screw | | |
| 46 | 945442 | 4 | Washer | | |
| 47 | 832296 | 1 | Overflow valve | | |
| | | | | 04A-1000 | |
| 48 | 955537 | 2 | Screw | | |
| 49 | | 1 | LIFT CYLINDER WITH CONNECTING COMPS | 04A-0950 | |
| 50 | 686833 | 1 | Expansion tank | | |
| 51 | 832478 | 1 | Cover | | |
| 52 | 832391 | 1 | Bracket | | |
| 53 | 959931 | 1 | Screw | | |
| 54 | 940191 | 1 | Washer | | |
| 55 | 946153 | 1 | Nipple | | |
| 56 | 943907 | 1 | Gasket | | |
| 57 | 832383 | 1 | Hose | | |

AQD70B,AQD70BL

| REF | PART NO. | QTY | DESCRIPTION | SEE SEC. | NOTES |
|-----|----------|-----|----------------------------|----------|--|
| 58 | 961663 | 2 | Clamp | | |
| 59 | 832410 | 1 | Bushing | | |
| 60 | 803808 | 1 | Tap | | |
| 61 | 832402 | 1 | Nipple | | |
| 62 | 943907 | 1 | Gasket | | |
| 63 | 944496 | 1 | Washer | | |
| 64 | 946152 | 1 | Nipple | | |
| 65 | 958226 | 1 | O-ring | | |
| 66 | 832366 | 1 | Tube | | |
| 67 | 943706 | X | Hose | | L = 280 MM |
| 68 | 961663 | 2 | Clamp | | |
| 69 | 832368 | 1 | Hollow screw | | |
| 70 | 946154 | 2 | Gasket | | |
| 71 | 959931 | 1 | Screw | | |
| 72 | 940191 | 1 | Washer | | |
| 73 | 832385 | 2 | Oil filter | | |
| 74 | 956971 | 2 | Ferrule | | |
| 75 | 956985 | 2 | Nut | | |
| 76 | 943908 | 4 | Gasket | | |
| 77 | 832322 | 2 | Sleeve | | |
| 78 | 955993 | 2 | O-ring | | |
| 79 | 832334 | 2 | Elbow nipple | | |
| 80 | 955989 | 2 | O-ring | | |
| 81 | 832329 | 1 | Grommet | | S.B |
| | 832330 | 1 | Grommet | | P |
| 82 | 960166 | 2 | O-ring | | |
| 83 | 906633 | 2 | Nut | | |
| 84 | 832483 | 2 | Hollow screw | | |
| 85 | 400830 | 4 | Gasket | | |
| 86 | 832380 | 2 | Hose, HOSE | 04A-0950 | |
| | | | | | L = 600 MM |
| | 832380 | 1 | Hose, HOSE | | L = 600 MM. FOR AQD70B SPEC 867167, AQD70C SPEC 867224, AQD70CL SPEC 867266. |
| | | | | 04A-0950 | |
| 87 | 832381 | 1 | Hose, HOSE | 04A-0950 | |
| | | | | | L = 750 MM |
| | 832381 | 2 | Hose, HOSE | | L = 750 MM. FOR AQD70B SPEC 867167, AQD70C SPEC 867224, AQD70CL SPEC 867266. |
| | | | | 04A-0950 | |
| 88 | 832394 | 2 | Hose | | SEE GROUP 6 |
| 89 | 956985 | 4 | · Nut | | FOR EARLY TYPE OF 832394 |
| | 956985 | 2 | · Nut | | |
| 90 | 957057 | 1 | · Fitting | | FOR EARLY TYPE OF 832394 |
| 91 | 956971 | 4 | · Ferrule | | FOR EARLY TYPE OF 832394 |
| | 956971 | 2 | · Ferrule | | |
| 92 | 946827 | 2 | Lock nut | | |
| 93 | | X | CABLES AND TERMINALS SCREW | | SEE GROUP 3 |
| 94 | 955522 | 2 | Screw | | |
| 95 | 839089 | 4 | Hose | | SEE GROUP 6 |
| 96 | 944587 | 1 | O-ring | | |
| 97 | 940097 | 2 | Washer | | |
| 98 | | 1 | EXTENSION HOSE | | SEE GROUP 6 |
| 99 | 945359 | 2 | Fitting | | |